

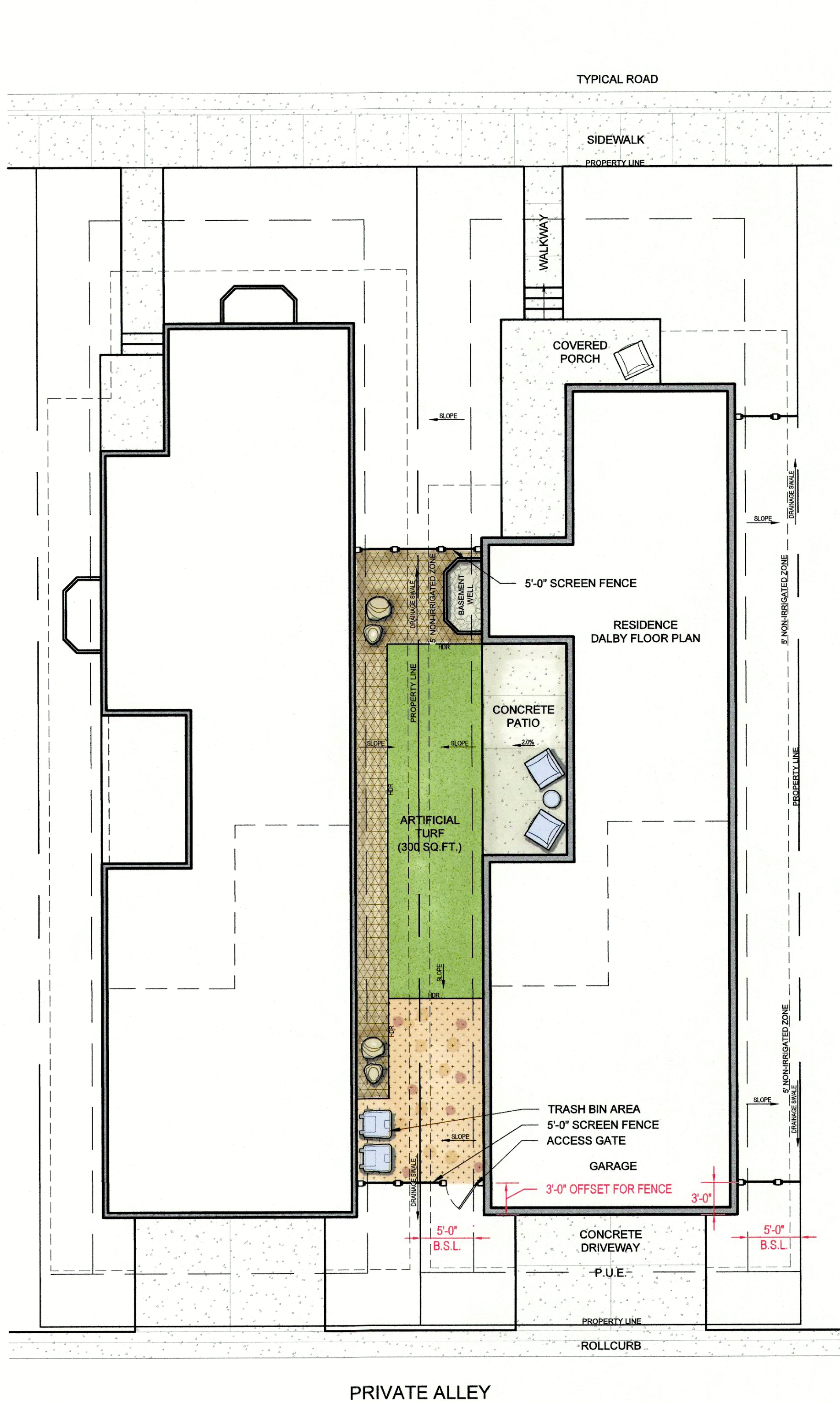
DALBY TYPICAL FRONT YARD AND ALLEY

0' 8' 16'
SCALE: 1/8" = 1'-0"

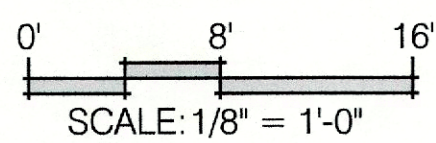
LEGEND (FRONT YARD/ ALLEY & SIDE YARD)

- ORNAMENTAL TREE (2" CALIPER)
- LARGE EVERGREEN SHRUB (5 GALLON)
- LARGE DECIDUOUS SHRUB (5 GALLON)
- SMALL/ MEDIUM EVERGREEN SHRUB (1 GALLON)
- SMALL/ MEDIUM DECIDUOUS SHRUB (1 GALLON)
- ORNAMENTAL GRASS (1 GALLON)
- CONCRETE PAVING W/ CONTROL JOINT, LIGHT BROOM FINISH, NATURAL COLOR
- PA PLANTING AREA- AMENDED SOIL TO A DEPTH OF 12"
- RIVER ROCK, 2"-4" ROUND, GRAY/BROWN COLOR W/ FABRIC
- DECOMPOSED GRANITE, 1/4" MINUS, BEIGE COLOR, 3" DEPTH W/ FABRIC
- ROCK MULCH, 1-1/2" ANGULAR, 2" DEPTH, BEIGE COLOR W/ FABRIC
- COMPOSTED WOOD MULCH 3" DEPTH, BROWN COLOR WITHOUT FABRIC
- ARTIFICIAL TURF, INSTALLED PER MANUFACTURER'S RECOMMENDATIONS
- BOULDERS, LARGE 2'X3', SMALL 2'X2', LOCALLY SOURCED
- ALUMINUM EDGER, EDGER CROSSING A SWALE TO BE PERFORATED WITH 1/2" HOLES AT 4" O.C.
- 5' WOOD PRIVACY FENCE
- PROPOSED ELEVATION
- SLOPE

NOTE: ALL PLANTING AREAS TO BE IRRIGATED BY AN AUTOMATIC SYSTEM WITH CONTROLLER. PLANTING TO RECEIVE DRIP IRRIGATION.



DALBY TYPICAL SIDE YARD



LEGEND (FRONT YARD/ ALLEY & SIDE YARD)

- ORNAMENTAL TREE (2" CALIPER)
- LARGE EVERGREEN SHRUB (5 GALLON)
- LARGE DECIDUOUS SHRUB (5 GALLON)
- SMALL/ MEDIUM EVERGREEN SHRUB (1 GALLON)
- SMALL/ MEDIUM DECIDUOUS SHRUB (1 GALLON)
- ORNAMENTAL GRASS (1 GALLON)
- CONCRETE PAVING W/ CONTROL JOINT, LIGHT BROOM FINISH, NATURAL COLOR
- PA PLANTING AREA- AMENDED SOIL TO A DEPTH OF 12"
- RIVER ROCK, 2"-4" ROUND, GRAY/BROWN COLOR W/ FABRIC
- DECOMPOSED GRANITE, 1/4" MINUS, BEIGE COLOR, 3" DEPTH W/ FABRIC
- ROCK MULCH, 1-1/2" ANGULAR, 2" DEPTH, BEIGE COLOR W/ FABRIC
- COMPOSTED WOOD MULCH 3" DEPTH, BROWN COLOR WITHOUT FABRIC
- ARTIFICIAL TURF, INSTALLED PER MANUFACTURER'S RECOMMENDATIONS
- BOULDERS, LARGE 2'X3', SMALL 2'X2', LOCALLY SOURCED
- HDR ALUMINUM EDGER. EDGER CROSSING A SWALE TO BE PERFORATED WITH 1/2" HOLES AT 4" O.C.
- 5' WOOD PRIVACY FENCE
- +62.85 PROPOSED ELEVATION
- 2.00 SLOPE

NOTE: ALL PLANTING AREAS TO BE IRRIGATED BY AN AUTOMATIC SYSTEM WITH CONTROLLER. PLANTING TO RECEIVE DRIP IRRIGATION.